

PRESERVICE  
DIVISION

# STUDENT CHAPTER HANDBOOK 2025/2026



NATIONAL  
ART EDUCATION  
ASSOCIATION



# STUDENT CHAPTER HANDBOOK

## 2025–2026

### TABLE OF CONTENTS

MEMBERSHIP INFORMATION.....	1
MEMBERSHIP BENEFITS.....	2
GOALS & OBJECTIVES OF PRESERVICE CHAPTERS.....	3
ROLES & RESPONSIBILITIES OF PRESERVICE CHAPTERS.....	4
SUGGESTED OFFICES AND POSITIONS.....	5
PRESERVICE CONSTITUTION.....	6
PRESERVICE BYLAWS.....	7
YEAR AT A GLANCE.....	8
YOUR STUDENT CHAPTER ON CAMPUS .....	9
TIPS FOR CHAPTER SUCCESS AND FUND-RAISING .....	10
PRESERVICE OPPORTUNITIES .....	11
PRESERVICE LEADERSHIP OPPORTUNITIES .....	12
MONTHLY MENTORSHIP PILOT PROGRAM.....	13
CONTACTS AND CONNECTIONS.....	14
UNIVERSITY ORGANIZATION REGISTRATION FORM .....	15–16

# WELCOME LETTER

Dear Preservice Chapter Members,

Thank you for registering your Preservice Chapter for the 2025–2026 school year! Once you have officially registered your chapter, you will receive an email confirmation with your official Preservice Chapter Charter. Remember that all Preservice Chapter members must be active NAEA members. Preservice students will receive individual digital membership cards upon registration.

NAEA membership provides a unique platform for Preservice students to grow as leaders, showcase their work, and connect with other Preservice members. As a registered Preservice Chapter, access these member benefits to enhance your experience and journey with us.

## Preservice Chapter Resources and Member Benefits:

- Official Preservice Chapter Charter
- 2025–2026 Preservice Program Calendar
- NAEA Awards
  - Preservice Chapter Sponsor of Excellence Award
  - Higher Education Preservice Achievement Award
  - National Preservice Art Educator Award
  - Preservice Division Regional Awards
- Leadership Opportunities
  - Preservice Division Director-Elect and Regional Representative Positions
- NAEA Member Juried Exhibition
  - Submissions Open: Monday, July 29
  - Submissions Close: Monday, September 23
- Online Professional Learning for Preservice Members
  - What I Wish I Knew Before I Started Teaching: Advice for Preservice & Early Career Teachers
  - Balancing Acts: Strategies for Preservice Art Educators to Thrive as Artists and Instructors
  - Studio Procedures: Tips and Tricks for Back-to-School
  - Student Teaching 101
  - Candidate to Classroom: Preparing for an Art Teacher Interview
  - And more!
- Monthly Mentor: Collaborative Discussions on Insights & Applications (Mentorship Pilot Program)
- Biannual Preservice State Leader Meetings
- Preservice Community on NAEA Collaborate (online NAEA member network)
- Preservice Newsletters: Submit your Preservice chapter news and highlights to be featured!
- Visit the Preservice Division web page for more benefits and information!

Stay connected and share your Preservice chapter highlights throughout the year! Follow and tag us at @naea\_arteducators on Instagram, Facebook, and TikTok! You can also follow NAEA's Preservice Division on Instagram and Facebook or join the Preservice Facebook Group!

If you have any questions, please email Paula Liz, NAEA's Youth and Preservice Programs Manager, at [pliz@arteducators.org](mailto:pliz@arteducators.org) or call 800-299-8321 (M–F, 8:15–4:30 ET).



Paula Liz | Youth and Preservice Program Manager  
[pliz@arteducators.org](mailto:pliz@arteducators.org) | [arteducators.org](https://arteducators.org)



# WELCOME TO THE NAEA PRESERVICE DIVISION!

The Preservice Division is growing and thriving. Representing and supporting all college students—undergraduate and graduate—in art education and related fields, the Preservice Division works to foster and shape the next face of art education in our nation.

We owe this growth to the support of NAEA and to the visionary leadership of our Student Chapter Presidents. Key members of the Student Chapter put forth a request to the Board for consideration to have a full-fledged seat at the table. After careful study, the NAEA Board of Directors recommended action by the 2013 Delegates Assembly. The recommendation was put forth to the 2013 Delegates Assembly; registered delegates voted unanimously to recommend the establishment of a new Preservice Division to the membership for their consideration and vote. Members voted yes on the proposed new Preservice Division and related amendment to the NAEA Constitution.

The Preservice Division leadership structure has since transitioned to align with the NAEA Division structures, and now consists of a Division Director, Division Director-Elect, and Regional Division Directors. Representing 11% of the total NAEA membership, we are a dedicated and engaged voice in the field. We now have a wide array of leadership roles available for full-time art education and related-field college students.

There is always room for more connections and contacts within this growing Division. Please join, follow, and friend request the Preservice Division on our various social media platforms. Also, connect with our leadership directly via phone or email. Share what is working with your Student Chapter, and look to other Student Chapters for support and ideas.

It is our hope that you will find this handbook useful, and that these and other NAEA and NAEA Preservice support documents will aid you in creating your best possible NAEA Student Chapter. Please be in touch and let us know what more we can do for you.

## MEMBERSHIP INFORMATION

All Student Chapter members must hold Preservice memberships in NAEA, and chapter advisors must maintain an active NAEA membership. Many NAEA membership rates automatically include membership to state associations. Please note, you must be a full-time or undergraduate student to qualify for NAEA Preservice membership. Proof of student enrollment—such as a photocopy of your college ID or a transcript—must be submitted to NAEA for verification at [members@arteducators.org](mailto:members@arteducators.org). NAEA membership can be purchased online at: [www.arteducators.org/promo/join](http://www.arteducators.org/promo/join)

**To register a chapter, complete the Student Chapter registration form (p. 15–16) annually and submit it via fax: 703-860-2960, or email [pliz@arteducators.org](mailto:pliz@arteducators.org).**

Students from outside an institution's art education program may wish to join a Preservice Chapter. This is strongly encouraged by NAEA, as broad membership from multiple departments within art or education brings diversity, strength, and new ideas to our organization. Consider inviting studio art, general education, museum studies, and art history majors to your events and meetings.

NAEA's membership includes individuals from multiple facets of the art education field, including museum educators, higher education professionals, community arts organization leaders, teaching artists, studio instructors, and more! Additionally, members can join an NAEA Interest Group.

*Student Chapter: Texas Woman's University*





# MEMBERSHIP BENEFITS

**NAEA MEMBERS ARE ENTITLED TO AN INCREASING RANGE OF BENEFITS, INCLUDING:**

- **CONNECTIVITY:** Connect virtually and in person to a network of thousands of visual arts educators actively engaged in visual arts, teaching, and learning. Tap into information and opportunities specific to your teaching level, state, or geographic region.
- **COLLABORATE:** NAEA Collaborate is available exclusively to members. This new online community provides NAEA members and art educators with a space to find and share information and resources, gain inspiration, and make connections anytime, anywhere!
- **ONLINE PROFESSIONAL LEARNING:** Members can access the NAEA Professional Learning Studio. Engage in live and archived monthly webinars for FREE and earn professional development credit from NAEA or university credit through California State University, Chico.
- **SUBSCRIPTIONS:** Members receive a free subscription to *Art Education*, the premier professional journal for art educators, that includes timely articles, instructional resources, and more. You'll also get digital access to *NAEA News*, the official newsletter of the National Art Education Association, to keep you in touch with what is happening in art education.
- **NAEA NATIONAL CONVENTION:** Members receive exclusive NAEA National Convention registration discounts. As a member, you can submit a presentation proposal, and you are first to know about special sessions, hands-on workshops, and opportunities.
- **LEADERSHIP:** There are so many leadership opportunities for NAEA members! Be elected to serve on the Board of Directors, apply to attend the prestigious School for Art Leaders, attend the National Leadership Conference, serve as a National Convention Proposal Reviewer, serve on the Editorial Board for *Art Education* or *Studies in Art Education*, and more!
- **INSURANCE DISCOUNTS:** As a member, you qualify for discounts on a variety of insurance programs including professional liability insurance, life insurance, disability insurance, health insurance, auto and home insurance, and additional plans and benefits.
- **INTEREST GROUPS:** Connect with like-minded colleagues and increase your impact on visual arts education! As an NAEA member, you have the opportunity to join any of the Association's official Interest Groups. Explore specific topics in art education, deepen your advocacy on special issues, and connect with colleagues who share your interests.

**Discover much more** with your full access to exclusive member-only content on the NAEA website!

*arteducators.org*



# GOALS & OBJECTIVES OF PRESERVICE CHAPTERS

The Strategic Pillars collectively serve as the North Star for all of NAEA's work, providing guidance and direction. Each of the pillars works interconnectedly with the others to achieve the overall goals of NAEA. The five pillars highlighted below can help organize and focus the efforts of a Student Chapter.

**Equity, Diversity, & Inclusion:** NAEA strives to be inclusive, welcoming, and open to all by establishing comprehensive strategies that work from the classroom outward, providing practitioners and state and national leaders in the field with direction and tools for addressing equity, diversity, and inclusion (ED&I). ED&I has an important role as a "super pillar" that is both its own unique goal as well as one that is interwoven across the other four. By embedding these actions into their activities, NAEA Preservice Chapters can create a more equitable and inclusive environment that prepares future art educators to support all students effectively.

**Advocacy & Policy:** NAEA Student Chapters are encouraged to provide outreach and advocacy for their organization, department, university, and community at large. In addition to preparing future leaders in the field, NAEA Student Chapters provide some of the first career-related advocacy opportunities that college students experience. Promoting visual arts education in its many forms is a great endeavor for Student Chapters.

**Learning:** Within both NAEA's organization and your college or university, opportunity abounds for you to grow and develop. Regularly visit the multiple resources and tools available on NAEA's website to inform your learning and motivate your personal explorations.

Creating a learning environment within your Student Chapter is also a great way to keep ideas flowing in your department. Consider hosting how-to evenings or non-graded demos. Invite students to share the work they are doing, and involve your Student Chapters with other arts organizations on your campus for interdisciplinary development.

**Research & Knowledge:** The investigation of one's process, progress, outcomes, and methods creates great avenues for conducting one's own research. Investigating the common practices of the field and trends that have occurred or are occurring, and analyzing the relationships between fields and ideas are also beneficial to our collective understanding. If you are doing research, share it with NAEA. As undergraduate and graduate students, our research is both emerging and cutting edge. Anyone interested in researching within art education is encouraged to look into, and participate with, the NAEA Research Commission. The field of art education is brimming with new ideas and research opportunities. Consider proposing a paper you've worked on, or look into the field to inform your research as you begin. NAEA is a tremendous resource for much of the research being conducted in art education.

**Community Vibrancy:** The creation and development of community is important for a Student Chapter. Chapters are encouraged to publicize events to students who are part of the future field landscape (e.g., art history, museum studies, art studio) even if they are not specifically enrolled in the art education program. An important factor for developing the community of a Student Chapter is achieved by creating strong professional connections. Maximizing the quality of member connections is more important than the quantity of connections. As future professionals, Student Chapter leaders should build relationships that offer collaboration and commitment among student members. Consider using multiple forms of communication to appeal to your existing and prospective members. Social media, flyers, emails, in-class announcements, and word of mouth all have a place in your communication toolkit.



# ROLES & RESPONSIBILITIES OF PRESERVICE CHAPTERS

A Student Chapter's primary focus should be to represent, support, and advocate for art education—both at its local university and in its immediate community. When possible, student chapter members are encouraged to attend and present at state-level art education association conferences, regional workshops, and other related events.

Establishing clear roles and responsibilities for preservice chapters is crucial for their success and efficiency. It ensures that each member understands their specific duties, promoting accountability, and effective collaboration. Clear roles also facilitate smooth operations, help prevent misunderstandings, and enable the chapter to achieve its goals by leveraging the strengths and skills of its members. Ultimately, well-defined responsibilities foster a professional and organized environment that benefits all members while enhancing the chapter's impact. Below is a list of suggested roles and responsibilities. Please note these responsibilities are not mandated or required, and each institution may organize their roles and responsibilities as needed.

## FACULTY ADVISORS

- **NAEA Member:** Must be an active NAEA member in good standing.
- **Guidance and Mentorship:** Provide advice and support to chapter officers and members.
- **Oversight and Compliance:** Ensure the chapter adheres to NAEA Preservice Constitution guidelines and campus regulations.
- **Supervision:** Approve and supervise chapter meetings, activities, and events.
- **Membership:** Recommend members to join the Preservice chapter. Criteria used to determine membership selection beyond faculty recommendation shall be set forth in this chapter's bylaws.

## PRESERVICE CHAPTER MEMBERS

- **Active Participation:** Attend meetings regularly and engage in chapter events and activities.
- **Committee Involvement:** Serve on committees to help plan and execute chapter projects and initiatives.
- **Advocacy and Outreach:** Promote the importance of art education on campus and within the community.
- **Professional Development:** Participate in workshops, seminars, and other opportunities for growth and learning.
- **Support and Collaboration:** Work collaboratively with other members and officers to achieve the chapter's goals and mission.

## ELECTED OFFICERS

- **Planning:** Lead chapter meetings and set agendas.
- **Representation:** Represent the chapter at campus and NAEA events.
- **Activities and Events:** Coordinate with faculty advisors and oversee all chapter activities. Organize and manage chapter events.
- **Connect:** Liaise with other campus organizations and external partners.
- **Record Keeping:** Maintain accurate records of meetings, including minutes and attendance.
- **Communications:** Handle chapter correspondence and communications.
- **Membership:** Keep an updated member roster and manage chapter documentation.
- **Finances:** Maintain chapter's finances, including budgeting, fund-raising, and expense tracking.
- **Promotion:** Promote chapter events and activities through social media and other communication channels. Design and distribute promotional materials.





# SUGGESTED OFFICES AND POSITIONS



NAEA Student Chapters are independently operated and organized at each institution. Below are suggested officer roles and committees for the governing body of your Preservice Student Chapter. Please note that these roles are not mandated or required, and each institution may organize their leadership as needed.

## **PRESIDENT**

- Responsible for supervising and overseeing the work of other officers and ensuring the function of an effective team
- Upholds the vision and direction of the organization
- Serves as representative and liaison for the organization
- Schedules and leads officer and organization meetings
- Serves as a role model within and outside of the organization

## **VICE PRESIDENT**

- Specific roles and responsibilities for this position as discussed with the President to ensure effectiveness
- Supervises the committee chairs and the work of all committees
- Delegates responsibilities to committee chairs
- Actively tracks the committees' progress
- Assumes responsibility in the President's absence

## **SECRETARY**

- Records and distributes, in a timely matter, all public information to members, including meeting minutes, upcoming events, and opportunities
- Handles all organizational correspondence, including social media
- Keeps current membership lists with names, addresses, and phone numbers
- Maintains thorough organizational files and records
- Serves as representative for university-level organizational meetings, trainings, and correspondence

## **TREASURER**

- Establishes annual budget for organization and ensures it is followed
- Regularly reports the group's financial status
- Manages day-to-day financial transactions
- Records and pays bills and reimbursements
- Deposits and withdraws funds

## **HISTORIAN**

- Keeps account of organizational records, accolades, media coverage, and documents
- Thoroughly documents all organizational events through photographs, video, or written descriptions, and submits them to Secretary

## **COMMITTEES**

Committees are created and dismantled according to the needs of the Student Chapter. Officers are encouraged to join committees to show support and encourage leadership among members at large. Some suggested committees are:

- Awards and Ceremonies
- Public Relations
- Activities: Social and Events Planning
- Outreach and Service

All leadership roles within a Student Chapter are also tasked with the mentorship and encouragement of incoming leaders. Support, growth, connection, and continual development are the strengths of the NAEA Preservice Division. Such strength is fostered at the local level, and serves our members throughout their careers.

# PRESERVICE CONSTITUTION



The purpose of Preservice Chapters is to uphold a high standard of quality art education on college campuses, in the community and virtually to provide students with a smooth transition from art education preparation to professional practice.

## **Article I: Name and Purpose**

**Section 1.** The name of this chapter shall be the \_\_\_\_\_ Preservice Chapter of the National Art Education Association.

**Section 2.** The purpose of the chapter shall be to:

- A. Inspire and recognize those students who have shown outstanding ability in art education;
- B. Foster excellence and a dedicated spirit to the pursuit of art education;
- C. Further creative abilities and talents of the chapter's members, as well as the school's entire student art education enrollment;
- D. Aid members in working toward the attainment of their highest potential in art education;
- E. Bring art education to the attention of the school and community;
- F. Increase awareness of art education in relation to other areas of the school curriculum; and
- G. Further aesthetic awareness in all aspects of the school's total program.

## **Article II: Local Chapters**

**Section 1.** Public, private, and virtual schools and community-based nonprofit art organizations are eligible to apply for charter through the National Art Education Association (NAEA).

## **Article III: Membership**

**Section 1.** Membership in this chapter shall be based upon art scholarship, service, and character.

**Section 2.** To be eligible for selection to membership in this chapter, the candidate must be a college student and have completed an art education course equivalent to 1 semester in this school.

**Section 3.** An eligible candidate shall have a minimum art education scholarship average of B, or this school's equivalent. This is the national minimum standard of achievement required for eligibility and shall remain fixed.

**Section 4.** Members may remain active during such time when there is no art education on their class schedule.

## **Article IV: Selection of Members**

**Section 1.** The selection of members to this chapter shall be by recommendation from the art faculty of this school who are members in good standing of the National Art Education Association (NAEA). Criteria used to determine membership selection beyond faculty recommendation shall be set forth in this chapter's bylaws.

**Section 2.** Any member who falls below the standards that are the basis for selection shall be promptly warned. If during the next regular marking period of the school, the member fails to meet the standards used as basis for selection to the chapter, the case shall be passed upon by the chapter council.

**Section 3.** When a member is dismissed, they must be notified and the membership card returned to the chapter sponsor.

**Section 4.** NAEA does not participate in matters of member non-selection or dismissal.

## **Article V: Officers**

**Section 1.** The officers of this chapter shall be President, Vice President, Secretary, and Treasurer (these could be combined). Optional officers include Historian/Parliamentarian, Chair for Awards and Ceremonies, Chair for Public Relations, and Chair for Activities.

**Section 2.** A majority of votes cast shall be necessary to elect any officer of this chapter.

**Section 3.** It shall be the duty of the president to preside at the meetings of this chapter.

**Section 4.** The vice president shall preside in the absence of the president, and serve as the chapter's program chair.

**Section 5.** The secretary shall keep the minutes of the meetings, a record of all business, and all records on file.

**Section 6.** The treasurer shall receive and disburse all funds of the chapter and keep an accurate account of receipts and disbursements in accordance with school regulations.

**Section 7.** A chapter council shall consist of the chapter president, vice president, secretary, treasurer, and the chapter sponsor.

## **Article VI: Supervision**

**Section 1.** An art faculty member (sponsor) shall be designated to supervise and provide guidance for this chapter on a daily basis.

**Section 2.** The sponsor shall be a member of the art faculty employed by the school.

**Section 3.** The post of sponsor shall be voluntary.

**Section 4.** The sponsor must be a National Art Education Association member in good standing.

**Section 5.** The activities of this chapter will be subject to the approval of the sponsor. The sponsor shall have the final right to approve all activities and decisions of this chapter.

## **Article VII: Meetings**

**Section 1.** The regular meetings of this chapter shall be held during the school year on days designated by the chapter council and approved by the sponsor.

**Section 2.** The officers of the chapter shall be elected at the last regular meeting of the year.

**Section 3.** Special meetings, approved by the chapter council, may be called by the president.

**Section 4.** All meetings shall be open meetings and shall be held under the supervision of the sponsor.

## **Article VIII: Membership Fees**

**Section 1.** A yearly Preservice membership fee of \$\_\_\* per student shall be forwarded to the National Art Honor Society at the NAEA National Office. (\*rate based on state)

**Section 2.** A yearly school sponsorship fee is required for each chapter and entitles the chapter sponsor to all the rights and privileges of one active NAEA membership, including all NAEA member and Preservice chapter benefits. The school sponsorship fee is waived for sponsors who are already active NAEA members. Cosponsors must be active NAEA members.

**Section 3.** School sponsorship fees and student membership fees may be paid by the individual or school, community group, or agency. Fees and registration forms must be submitted to NAEA by the chapter sponsor.

**Section 4.** School sponsorship and student membership fees are nonrefundable and nontransferable.

**Section 5.** Local chapters may establish and collect annual dues at their discretion for local operating expenses.

## **Article IX: Bylaws**

**Section 1.** A chapter may wish to include bylaws to amplify sections of its constitution. Bylaws do not need to be approved by the National Art Education Association if they are consistent with regulations outlined in the constitution.

**Section 2.** A current copy of local chapter bylaws must be filed with the NAEA office.

## **Article X: Constitution**

**Section 1.** NAEA reserves the right to amend this constitution based on input from the NAEA staff, the Preservice Division Director, and the Preservice Division Director-Elect.

# PRESERVICE BYLAWS

Bylaws outline the obligations of memberships that are required to be a part of your institution's Preservice Chapter. This guideline for the creation of bylaws helps ensure that your chapter upholds the National Standards as defined in the Chapter Constitution (page 6).

## **Section 1:**

A chapter should include bylaws to amplify sections of its constitution. Bylaws do not need to be approved by the National Council if they are consistent with regulations outlined in the constitution. A current copy of the local chapter bylaws must be filed with NAEA.

## **Section 2:**

To remain a member in good standing, a member must pay dues and complete \_\_\_\_ service hours in the visual arts each year. (You may adjust the number of hours to fit your school or community needs.)

## **Section 3:**

Annual dues of \$ \_\_\_\_ will be collected from each member. (The amount you charge should cover chapter registration fees and any other expenses you expect to incur.)

## **Section 4:**

Attendance is required at meetings to maintain membership and privileges. (You may set the number that may be missed with cause or adjust the meeting frequency to fit your school's schedule.)

## **Section 5:**

All members must participate in \_\_\_\_ of our projects, activities, and fund-raisers. (You set the number or percentage of events required.)

## **Section 6:**

For the elected officers, attendance is also required at any executive meetings called outside of the regularly scheduled meetings.

## **Section 7:**

To graduate with NAEA Preservice Chapter honors and earn the right to wear a cord, pin, or tassel at graduation, a member must remain in good standing until the graduation date.

## **Section 8:**

Members must retain a \_\_\_\_ average in art education classes. (Many schools require a higher GPA in art classes than the B required by the National Constitution. You may adjust the requirement or leave it at the required B average.)

## **Section 9:**

Members must have and maintain a \_\_\_\_ cumulative average in all other subjects. (Many schools require an overall minimum GPA. This change is not required, and the required minimum should not be as high as the art education GPA.)

## **Section 10:**

Members may remain active during such time when there are no art education classes on their schedules as long as they fulfill all of the other requirements each year.

## **Section 11:**

In the event of an infraction of rules, a review by the officers and sponsors will be conducted. If the individual in question is an officer, they will not participate in the decision-making process. This applies to all community laws as well as school and chapter rules.





# 2025–2026: SUGGESTED YEAR AT A GLANCE

## JULY

**July 1:** Official start of the 2025–2026 Preservice Program Year!

- **Recruit** and invite eligible members.
- **Renew** or start a new chapter. Make sure all chapter members are registered.
- **Nominate** a member for an NAEA Preservice Regional Director position.

## AUGUST

**August 21:** Join [Open Studio Conversation](#)

**August 28:** Attend [Monthly Mentor Meeting](#)

- **Update** your Chapter Bylaws.
- **Elect** officers for 2025–2026 school year.
- **Plan** your chapter's yearly budget.
- **Schedule** your reoccurring chapter meetings, fund-raisers, and events.
- **Submit** artwork for the [2025 NAEA Member Exhibit](#).

## SEPTEMBER

**Sept 16:** Preservice State Leaders Meeting

**Sept 18:** Join [Open Studio Conversation](#)

**Sept 24:** Attend [Monthly Mentor Meeting](#)

**Sept 25:** Preservice Chapter Interest Meeting

- **Participate** in your school's activity or club fair on campus.
- **Nominate** and notify members of upcoming [NAEA awards](#): Preservice Chapter Sponsor Award of Excellence.

## OCTOBER

**Oct 18:** Attend NAEA Saturday Studio

**Oct 23:** Join [Open Studio Conversation](#)

**Oct 28:** Attend [Monthly Mentor Meeting](#)

**Oct 30:** Deadline to submit nominations for 2026 [NAEA awards](#).

- **Register** for [NAEA26](#) before November 21 to save the most!
  - **Sign up** for mock interviews and to present a Preservice mini-session during the NAEA Convention!

## NOVEMBER

**Nov 18:** Attend [Monthly Mentor Meeting](#)

**Nov 20:** Join [Open Studio Conversation](#)

- **Hold** an induction ceremony and register new inductees online via the [NAEA Student Chapter Registration Form](#).
- **Register** your chapter early to get the most out of your NAEA membership!
- **Host** a chapter fund-raising and/or service event.

## DECEMBER

- **Host** an officer meeting and/or general meeting to close out the semester.
- **Share** your chapter pictures on social media and tag us at @naea\_arteducators and @preservice.naea!
- **Join** the [NAEA Preservice Group](#) on Facebook!

## JANUARY

**Jan 22:** Join [Open Studio Conversation](#)

**Jan 27:** Preservice State Leaders Meeting

**Jan 29:** Attend [Monthly Mentor Meeting](#)

- **Host** an officer meeting and/or general meeting to start out the semester.
- **Plan** your chapter's spring activities.

## FEBRUARY

**Feb 18:** Attend [Monthly Mentor Meeting](#)

**Feb 24:** Join [Open Studio Conversation](#)

- **Register** for the [2026 NAEA National Convention](#) before March 5!
- **Place** your resource order online for Preservice graduation merchandise. Allow 4 weeks for delivery.

## MARCH

**March 5–7:** Join us at the 2026 NAEA National Convention in Chicago, Illinois.

**March 26:** Join [Open Studio Conversation](#)

- **Host** a chapter fund-raising activity and/or service event.
- **Share** your chapter events and photos on social media! Be sure to follow and tag us on Instagram, Facebook, TikTok.

## APRIL

**April 2:** Attend [Monthly Mentor Meeting](#)

**April 23:** Join [Open Studio Conversation](#)

- **Host** a general members meeting and/or chapter activity.
- **Hold** officer elections for the 2026–2027 program year.

## MAY

**May 7:** Attend [Monthly Mentor Meeting](#)

**May 14:** [Open Studio Conversation](#).

- **Host** an end-of-year celebration and acknowledge your graduating members.

## JUNE

- **Submit** a proposal for the 2027 NAEA National Convention in New York. Submission deadline is June 30, 2026!

# YOUR STUDENT CHAPTER ON CAMPUS

## IDENTIFYING YOUR MISSION

To identify its mission on campus, a Preservice Chapter should start by gathering input from its members to understand their needs and aspirations. This can be achieved through surveys, focus groups, and open discussions, ensuring that the mission aligns with the collective goals of fostering professional growth, advocating for arts education, and building a supportive community for future art educators.

## SUGGESTED EFFORTS AND ACTIVITIES

Some suggested activities include hosting art workshops, lesson shares, organizing guest lectures from experienced art educators, and participating in community and service art projects. Additionally, members can benefit from professional development sessions, networking events, and collaborative exhibitions to enhance their skills and build a strong sense of community within the field of art education. Another approach is to align your activities into preexisting activities at your university or college.

## NAEA BEYOND YOUR CAMPUS

### STATE CONVENTIONS

Most states have an association at the state level that you can also join. While these organizations may or may not have a dues collection agreement with NAEA, they are still a valuable asset to your development as a professional in the field. Almost all state associations have an annual state convention or conference as well as regional meetings and events. When possible, plan to have members of your Student Chapter attend these events. If your entire Student Chapter is not available to attend, host a “sharing-out” session for those interested in the ideas and topics discussed at those events. States have many leadership roles available as well. If you plan to reside in the state where you are attending school, you are strongly encouraged to get to know your future colleagues and to get involved in these highly beneficial and educational events.



### NAEA NATIONAL CONVENTION

NAEA works hard to provide an amazing National Convention every year. Everyone in the organizational leadership and staff is involved in scoring presentation proposals, planning Division events, and working to develop themes for each year—all year long. Preservice members are strongly urged to attend, and many institutions offer support for attending professional conventions. Not only do Preservice Division members have an amazing array of topics to learn from, but students may also apply to present in two separate formats. The first, which is open to all NAEA members, is the presentation proposal. This can be found on NAEA’s website and is updated annually. The second option for presentations is within the Student Chapter Roundtables, held every year at NAEA National Conventions. These roundtables are only available to current full-time university students and can be presented individually or in small groups. Our 1-hour roundtables consist of three 20-minute mini-sessions of presentation. All Preservice members attending the NAEA National Convention are encouraged to apply to present at Preservice Roundtables. Applications can be found on the NAEA Preservice Division web page.





## 9 TIPS FOR CHAPTER SUCCESS

1. **Art Education Workshops:** Conduct art workshops for local elementary students, providing hands-on art experiences and fostering classroom experience.
2. **Lesson Shares:** Host meetings to share and reflect on sample lesson plans and curriculum.
3. **Art Educator Connections:** Invite art educators to meet with your chapter in person or virtually.
4. **Art Education Advocacy:** Share information about your school's art education program to offer students on campus insights into this potential career path.
5. **Community Art Projects:** Incorporate community art service learning projects in your chapter to foster creativity and positively impact the broader community.
6. **Business Collaborations:** Partner with local businesses related to art to create joint projects, exhibitions, or campaigns that benefit students and the community.
7. **Local Connections:** Plan field trips to local museums, galleries, and art institutions where students can appreciate art and engage with the local artistic community.
8. **Communications:** Have a regular column in the school newspaper or newsletter highlighting chapter activities and events.
9. **Website and Social Media:** Create a website and active social media presence for your chapter, showcasing ongoing projects, events, student art, and accomplishments to engage the community and build support. Be sure to follow and tag us at [@preservice.naea](#), [@naea\\_arteducators](#), and [#naeapreservice!](#)



## FUND-RAISING IDEAS

1. **Hold** an online auction of student artwork reproductions. Be sure to designate a starting bid amount.
2. **Design** and sell school spirit or pride T-shirts, hoodies, ball caps, water bottles, and/or sketchbooks.
3. **Create** and sell a calendar featuring member artwork.
4. **Set up** a game night or virtual bingo. Give participants the opportunity to pay to play and win unique artwork prizes.
5. **Sketch** and sell caricatures during lunch, athletic games, or community events.
6. **Host** in-person or virtual art lessons. Invite the community to take part in art education taught by student members. Accept donations for admittance and raffle student artwork as door prizes.
7. **Create** and sell craft items for holidays and campus events (Halloween, Valentine's Day, etc.).
8. **Host** a gift basket sale or raffle. Take the gift baskets to a whole new level by adding personalized work of art!
9. **Create** and sell a children's activity or a visual recipe book.
10. **Take part** in a restaurant fund-raiser night. Work with a well-known local restaurant so that part of the proceeds are donated back.
11. **Design** and sell graduation yard signs for graduating seniors on campus.





# PRESERVICE OPPORTUNITIES

## NAEA AWARDS

Download the 2025 NAEA Awards Program Booklet containing details on all NAEA awards and necessary nomination materials [here](#).

## PRESERVICE CHAPTER SPONSOR AWARD OF EXCELLENCE

This award recognizes dedication to the development of future professional members of NAEA through sponsorship of an outstanding Preservice Chapter group at the college or university level.

## PRESERVICE REGIONAL DIVISION ART EDUCATOR AWARDS

These awards honor one outstanding NAEA member from the Preservice Division within each of the four geographic regions. This award recognizes exemplary service and achievement of regional significance within each Division.

## GRANT PROGRAMS

The National Art Education Foundation (NAEF) invests in innovative initiatives to support instructional practice, research, and leadership in visual arts education. Learn more about applying for a grant or donating to NAEF [here](#).

## NAEA MEMBER EXHIBITION

NAEA members are invited to submit artwork for possible inclusion in the annual juried exhibition, which will be held virtually.

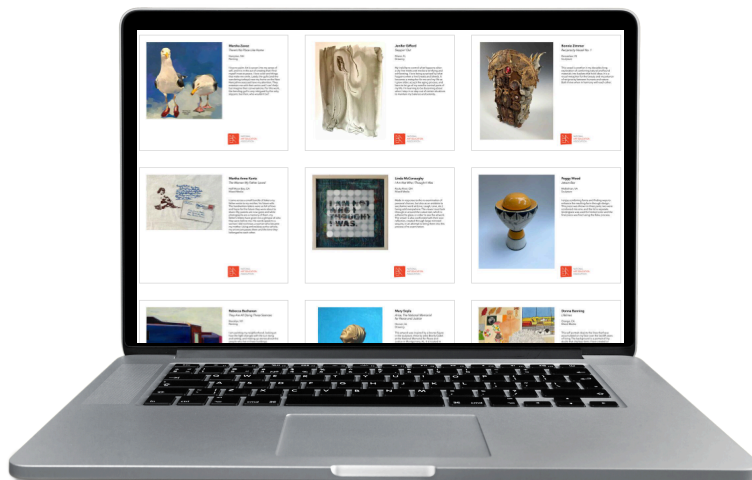
This exhibition showcases the talent of NAEA members and is seen by visual arts education professionals, creative leaders, and students from across the globe. Entries are submitted digitally by members. Learn more [here](#).



## WRITING FOR NAEA

NAEA publishes “state-of-the-arts” resources, in print and online, for K–12 visual arts teachers; university faculty in art education; arts researchers, librarians, and historians; museum and community arts educators; arts administrators; arts curriculum and standards developers; and arts education advocacy specialists and policy makers. All work is guided by NAEA’s 2020–2025 Strategic Plan. We invite you to submit articles for NAEA’s journals that reach a membership of over 15,000 art educators, as well as the diverse community of education leaders from every field.

Learn more about writing opportunities on the [NAEA website](#).



# PRESERVICE LEADERSHIP OPPORTUNITIES

## BOARD OF DIRECTORS

Every year, the NAEA Board of Directors seeks candidates for the position of Preservice Division Director-Elect. The NAEA Board of Directors guides the Association forward on behalf of NAEA's members and their learners. As a member of the NAEA Board of Directors, you have opportunities to connect with educators from across the country, represent your geographic region or membership division, and gain leadership experience on a national level. Please consider nominating NAEA members you know who are interested in national leadership and service. Self-nominations are also invited.

Preservice Division Directors serve 4 years: 2 years as Division Director-Elect and 2 years as Division Director. To be eligible for nomination for these leadership positions, individuals must be active NAEA members and be enrolled in an undergraduate or graduate program of study, spending at least 51% of their time as a student. Nominations for this position will open in spring 2026. For more information, please visit the [NAEA Election page](#).

## REGIONAL DIRECTORS

To offer the most support to individual colleges and universities, as well as to develop leadership in our emerging art education professionals, the Preservice Division needs regional representation. Regional Directors are nominated by the Division Director to serve a contiguous 2-year term with both the Director and Director-Elect. This position connects Regional Directors with students and student chapters across the states of each region. Each Regional Director will report activities, concerns, successes, and other information to the Division Director. For more information and application details, please email [pliz@arteducators.org](mailto:pliz@arteducators.org).

## PRESERVICE STATE LEADER REPRESENTATIVES

NAEA's Preservice State Leader Representatives are a group of dedicated art educators who serve as the voice for Preservice members within their respective states. These representatives play a crucial role in advocating for the needs and interests of future art teachers, facilitating communication between state organizations and the national body, and promoting professional development opportunities. By fostering a supportive network, the Preservice State Leader Representatives help ensure that aspiring and early career art educators are well-prepared and actively engaged in shaping the future of art education.

State leadership may appoint and submit the names and contact information for their state's Preservice State Leader Representatives via this [submission form](#). There is no limit to the number of Preservice State Leader Representatives in each state, and any and all Preservice members are invited to join our biannual meetings. If you are interested in attending a meeting, please contact Paula Liz, NAEA's Youth and Preservice Program Manager, at [pliz@arteducators.org](mailto:pliz@arteducators.org).

Below is a general description of the duties and responsibilities within this role:

- Establish and maintain regular contact with all NAEA Preservice Chapters in the state.
- Serve as liaison between NAEA, the Preservice Director, and state-level Preservice Chapters.
- Virtually attend all NAEA Preservice State Leader Representatives meetings.
  - Fall Meeting: Tuesday, September 16, 7:00–8:00 pm ET
  - Spring Meeting: Tuesday, January 27, 7:00–8:00 pm ET

# MONTHLY MENTOR PILOT PROGRAM

## Collaborative Discussions on Insights and Applications

### PROGRAM OVERVIEW:

The National Art Education Association (NAEA) is thrilled to introduce Monthly Mentor Meetings—a new program designed to bring art educators together for rich, collaborative conversations. Each session offers a space to explore classroom strategies, share insights, and connect with others who are passionate about art education.

### PROGRAM GOALS:

- Connect art educators with mentorship, encouragement, and real-world support
- Foster ongoing professional growth through shared expertise
- Build community through authentic, meaningful conversations
- Share proven strategies and resources to elevate classroom practice

### WHY JOIN:

This pilot program is more than professional development—it's a chance to engage with a vibrant community of educators who understand your journey. Through thoughtful dialogue and shared experiences, you'll gain new tools, fresh perspectives, and renewed excitement in your teaching journey.

### WHAT TO EXPECT:

Each month, members meet virtually for an hour-long session packed with collaborative discussion, teaching applications, and actionable takeaways. These meetings are designed to be energizing, reflective, and immediately useful in your teaching life.

### BENEFITS FOR PRESERVICE ATTENDEES:

- Guidance and encouragement from experienced teachers
- Practical resources and effective teaching strategies
- Opportunities to build lasting professional connections

**2025–2026 MEETING DATES:** *All sessions are held online from 7:00–8:00 pm ET.*

- |                                 |   |
|---------------------------------|---|
| • Thursday, August 28, 2025     | • Wednesday, February 18, 2026  |
| • Wednesday, September 24, 2025 | • March 4–7, 2026: Join us at the NAEA National Convention in Chicago, IL |
| • Tuesday, October 28, 2025     | • Thursday, April 2, 2026   |
| • Tuesday, November 18, 2025    | • Thursday, May 7, 2026   |
| • Thursday, January 29, 2026    |   |

All NAEA members are welcome to participate—whether you're starting your teaching journey or an experienced educator ready to share your expertise.

**[Click here to learn more and register today!](#)**



# CONTACTS AND CONNECTIONS

## ONLINE PRESENCE

Our Division strives to connect and communicate in the most convenient means for our Division members. Below are our current online social media outlets:

**Facebook Page:** [facebook.com/preservice.naea](https://facebook.com/preservice.naea)

**Facebook Group:** [facebook.com/groups/452846003753276](https://facebook.com/groups/452846003753276)

**Instagram:** [@preservice.naea](https://instagram.com/preservice.naea) and [@naea\\_arteducators](https://instagram.com/naea_arteducators)

**LinkedIn:** [linkedin.com/in/naea-preservice-division-232249105](https://linkedin.com/in/naea-preservice-division-232249105)

**Collaborate Online Forum:** [collaborate.arteducators.org/communities](https://collaborate.arteducators.org/communities)

## CURRENT (2025–2026) LEADERSHIP

Please feel free to contact your leadership directly with any concerns or questions. This is a developing Division, and we each have a lot to offer to art education, both now and in the bright future we will ensure together.



**BRITTANY BRADLEY**

Preservice Division Director (2025–2027)

Email: [brittany.bradley@board.arteducators.org](mailto:brittany.bradley@board.arteducators.org)



**REILLY POWERS**

Preservice Division Director-Elect (2025–2027)

Email: [reilly.powers@board.arteducators.org](mailto:reilly.powers@board.arteducators.org)



## NAEA STAFF

NAEA's Youth and Preservice Program Manager works closely with the Preservice Division to increase engagement and develop programming to support visual arts, design, and media arts education and creative career pathways. Please contact with any ideas, questions, or concerns.

**PAULA LIZ**

NAEA's Youth & Preservice Program Manager

Email: [pliz@arteducators.org](mailto:pliz@arteducators.org)



## UNIVERSITY AND ORGANIZATION REGISTRATION

Complete this form and roster and return electronically to [pliz@arteducators.org](mailto:pliz@arteducators.org).

INSTITUTION	ADVISOR
Institution Name	Advisor's Name and Title
Institution Mailing Address	Advisor's Mailing Address
City/State/Zip	City/State/Zip
Chapter Website URL (if applicable)	Advisor's Email Address
	Advisor's Office Telephone Number

STUDENTS	
Student Leader's Name	Student Leader's Mailing Address
Student Leader's Email Address	City/State/Zip
Student Leader's Telephone Number	Current Number of Student Members:

ACTIVITIES
Major Activities Accomplished Within the Past Year (if applicable)

ASSIGNED MENTOR	Would you like your Preservice chapter to have an assigned RAEA mentor?	Yes <input type="checkbox"/>	No <input type="checkbox"/>
-----------------	---	------------------------------	-----------------------------

## REGISTRANTS

*All students must be registered NAEA Preservice members.*

STUDENT NAME	NAEA ID #	EXPECTED GRADUATION DATE:	EMAIL/TELEPHONE

**REGISTRANTS, CONT.** *All students must be registered NAEA Preservice members.*

*All students must be registered NAEA Preservice members.*

*To list additional members, please submit the entire roster as a Microsoft Word document, including each member's NAEA ID Number, email address, and expected graduation date.*





*arteducators.org*

901 Prince Street, Alexandria, VA 22314  
800-299-8321 | [info@arteducators.org](mailto:info@arteducators.org)